

DH-IPC-HFW5442T-SE

4MP Pro AI IR Bullet Network Camera



- 1/1.8" 4Megapixel progressive scan CMOS
- H.265 & H.264 triple-stream encoding
- 25/30 fps@2688 × 1520, 50/60 fps@1080P (1920 × 1080)
- WDR (140 dB), Day/Night (ICR), 3D DNR, AWB, AGC, BLC
- Multiple network monitoring: Web viewer, CMS (DSS/PSS) & DMSS
- 2.8 mm fixed lens (3.6 mm, 6.0 mm optional)
- Max. IR LEDs Length 50 m
- Micro SD memory, IP67, IK10



System Overview

Pro AI series contains Face Detection, Perimeter Protection and People Counting functions. Powered by deep-learning Artificial Intelligence algorithms, significantly improved accuracy. Active Deterrence and Full Color camera are also in this series. Meanwhile, the series features starlight and smart IR technology. This series fully protected from dust and water, certified to IP67 standard.

Functions

Face Detection

Face Detection is a software application that automatically captures faces from within a digital image or a video frame from a video source. Dahua cameras use advanced deep learning algorithms and are trained by a large number of face data sources, enabling the camera to locate faces quickly and accurately from the video source and capture facial images.

Perimeter Protection

Dahua's Perimeter Protection functions significantly improved accuracy. Perimeter Protection reduces false alarms and decreases pixel count requirements for object detection. Perimeter Protection features custom tripwires based on object type for automation in limited access areas such as pedestrian or vehicle-only zones. This combination of advanced AI analytics and real-time alerts to a desktop or to a mobile client reduces system requirements and resources resulting in greater surveillance system efficiency.

People Counting

People Counting function uses advanced image processing technology to capture depth information from within images. The camera pairs this information with deep learning algorithms to analyze and detect human bodies and track target objects in real time. The camera provides statistics for separate individuals' entrance and exit with up to 95% counting accuracy.

Protection (IP67, IK10, wide voltage)

The camera allows for $\pm 30\%$ input voltage tolerance, suitable for the most unstable conditions for outdoor applications. Its 6KV lightning rating provides effective protection for both the camera and its structure against lightning. Subjected and certified to rigorous dust and immersion tests (IP67) and impact tests (IK10), the camera is the choice for installation in even the most unforgiving environments.

ePoE technology

The ePoE technology of Dahua, designed internally, adopts advanced 2D-PAM3 coding modulation from physical layer, and realizes full duplex transmission over 800 meters at the speed of 10Mbps, or 300 meters at the speed of 100Mbps via Cat 5 or coaxial cable media. Besides, it supports PoE and PoC power supply technology which has greatly simplified construction and wiring. Dahua ePoE technology offer a new way to accomplish long distance transmission between IP camera and network switch. It allows more flexible surveillance system design, improves reliability and saves construction and wiring cost.

Technical Specification						
Camera						
Image Sensor	1/1.8" 4Megapixel progressive scan CMOS					
Effective Pixels	2688 (H) × 1520 (V)					
RAM/ROM	512 MB/128 MB					
Scanning System	Progressive					
Electronic Shutter Speed	Auto/Manual, 1/3 s–1/100000 s					
Minimum Illumination	0.002 Lux@F1.6					
IR Distance	Distance up to 50 m (164 ft)					
IR On/Off Control	Auto/Manual					
IR LEDs	4					
Lens						
Lens Type	Fixed-focal					
Mount Type	Board-in					
Focal Length	2.8 mm, 3.6 mm, 6.0 mm					
Max. Aperture	F1.6					
Angle of View	H: 113°, V: 60°/H: 89°, V: 48°/H: 56°, V: 31°					
Aperture Type	Fixed					
Close Focus Distance	1.3 m (4.27 ft)/1.9 m (6.23 ft)/3.8 m (12.47 ft)					
DORI Distance	Lens	Detect	Observe	Recognize	Identify	
	2.8mm	58m(190ft)	23m(75ft)	12m(39ft)	6m(20ft)	
	3.6mm	72m(236ft)	29m(95ft)	14m(46ft)	7m(23ft)	
	6mm	113m(371ft)	45m(148ft)	23m(75ft)	11m(36ft)	
Pan/Tilt/Rotation						
Pan/Tilt/Rotation Range	Pan: 0°–360°; Tilt: 0°–90°; Rotation: 0°–360°					
Artificial Intelligence						
Face Detection	Support face image capture					
Perimeter Protection	Tripwire, intrusion (Recognition of vehicle and people), fast moving, loitering detection, parking detection and people gathering)					
People Counting	Support Line crossing/Region/Queueing people counting; Support 4 accesses independent detection, 4 areas independent detection					
General Intelligence						
Event Trigger	Motion detection, Video tampering , Scene changing, Network disconnection , IP address conflict, Illegal Access, Storage anomaly					
General Intelligence	Object Abandoned/Missing					
Heat Map	Yes					
Video						
Compression	H.265,H.264,H.264B,H.264H, MJPEG (sub stream)					
Smart Codec	Yes					
Streaming Capability	3 Streams					
Resolution	2688 × 1520/2560 × 1440/2304 × 1296/1080P (1920 × 1080)/1.3M (1280 × 960)/720P (1280 × 720)/D1 (704 × 576/704 × 480)/VGA (640 × 480)/CIF (352 × 288/352 × 240)					
Frame Rate	Main Stream: 2688 × 1520 (1 fps–25/30 fps) 2560 × 1440 (1 fps–25/30 fps) 1920 × 1080 (1 fps–50/60 fps) Sub Stream: D1 (1 fps–25/30 fps) D1 (1 fps–50/60 fps) Third Stream: 1080P (1 fps–16 fps)					
Bit Rate Control	CBR/VBR					
Bit Rate	H.264: 32 Kbps–8192 Kbps H.265: 19 Kbps–8192 Kbps					
Day/Night	Auto (ICR)/Color/B/W					
BLC Mode	BLC/HLC/WDR (140 dB)					
White Balance	Auto/Natural/Street Lamp/Outdoor/Manual					
Gain Control	Auto/Manual					
Noise Reduction	3D DNR					
Motion Detection	Off/On (4 Zone, Rectangle)					
Region of Interest	Off/On (4 Zone)					
Electronic Image Stabilization (EIS)	N/A					
Smart IR	Yes					
Defog	Yes					
Flip	0°/90°/180°/270°					
Mirror	Off/On					
Privacy Masking	Off/On (4 Area, Rectangle)					
Audio						
Compression	N/A					
Network						
Ethernet	RJ-45 (10/100 Base-T)					
Protocol	IPv4;IPv6;HTTP;HTTPS;TCP;UDP;ARP;RTP;RTSP;RTCP ;RTMP;SMTP;FTP;SFTP;DHCP;DNS;DDNS;QoS;UPnP ;NTP;Multicast;ICMP;IGMP;NFS;PPPoE;802.1x;SNMP					
Interoperability	ONVIF (Profile S/Profile G/Profile T), CGI, Milstone, Genetec, P2P					
Streaming Method	Unicast/Multicast					
Max. User Access	20 Users					
Edge Storage	NAS;FTP;SFTP Micro SD card 256 GB					
Web Viewer	IE (versions newer than IE8), Chrome, Firefox, Safari (versions newer than Safari 12)					
Management Software	Smart PSS, DSS, DMSS					
Smart Phone	iOS, Android					

Certifications

Certifications	CE-LVD: EN60950-1 CE-EMC: Electromagnetic Compatibility Directive 2014/30/EU FCC: 47 CFR FCC Part 15, Subpart B UL/CUL: UL60950-1 CAN/CSA C22.2 No.60950-1-07
----------------	--

Interface

Audio Interface	N/A
RS485	N/A
Alarm	N/A

Electrical

Power Supply	DC 12V (±30%), PoE (802.3af) (Class 0)
Power Consumption	<8.4W

Environmental

Operating Conditions	-30° C to +60° C (-22° F to +140° F)/Less than 95% RH
Storage Conditions	-30° C to +60° C (-22° F to +140° F)
Ingress Protection	IP67
Vandal Resistance	IK10

Construction

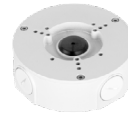
Casing	Metal
Dimensions	244.1 mm × 79.0 mm × 75.9 mm (9.61" × 3.11" × 2.99")
Net Weight	0.815 kg (1.80 lb)
Gross Weight	1.08 kg (2.38 lb)

Ordering Information

Type	Part Number	Description
4MP camera	DH-IPC-HFW5442TP-SE	4MP Pro AI IR Bullet Network Camera, WDR, PAL
	DH-IPC-HFW5442TN-SE	4MP Pro AI IR Bullet Network Camera, WDR, NTSC
	IPC-HFW5442TP-SE	4MP Pro AI IR Bullet Network Camera, WDR, PAL
	IPC-HFW5442TN-SE	4MP Pro AI IR Bullet Network Camera, WDR, NTSC
Accessories (optional)	PFA130-E	Junction Box
	PFA152-E	Pole Mount
	PFA151	Corner Mount

Accessories

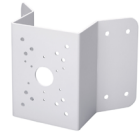
Optional:



PFA130-E
Junction box



PFA152-E
Pole Mount



PFA151
Corner Mount



LR1002
ePoE Over Coax
Converter

Junction Mount	Pole Mount	Corner Mount
PFA130-E	PFA130-E+ PFA152-E	PFA130-E + PFA151

Dimensions (mm[inch])

